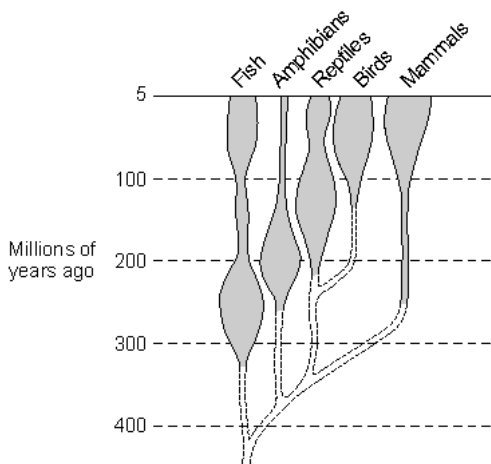


# Evolution

Use your knowledge to answer the questions below. Try peer marking once you're done to see how well you have done.

- ① The diagram shows how the number of species in different vertebrate groups changed between 400 million years ago and 5 million years ago.

The wider a block is, the more species there are.



- a) Which group had most species 200 million years ago?

---

- b) To which group are birds most closely related?

---

- c) Complete the following sentence:

A study of fossils gives evidence for the theory of \_\_\_\_\_

- ② Giraffes feed on the leaves of trees and other plants in areas of Africa. They are adapted, through evolution, to survive in their environment.



- a) Use the information in the picture to give one way in which the giraffe is adapted to its environment.

---

---

---

---

- b) Complete some research and explain how Jean-Baptiste Lamarck (1744–1829) accounted for the evolution of the long neck in giraffes.

---

---

---

---

- c) Another scientist, August Weismann (1834-1914) wanted to check Lamarck's explanation. To do this he cut off the tails of a number of generations of mice and looked at the offspring. His results did not support Lamarck's theory. Explain why.

---

---

---

---

- d) Explain how Charles Darwin (1809–1882) accounted for the evolution of the long neck in giraffes.

---

---

---

---