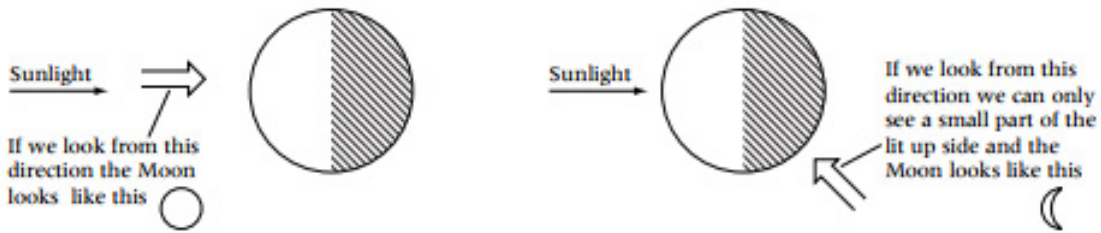
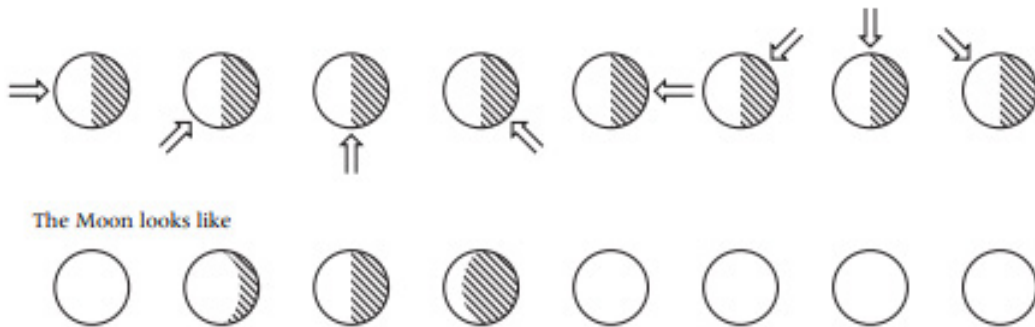


# Phases of the moon

Half of the moon is always lit by the Sun. The moon seems to change shape as it orbits the Earth because we are looking at it from different directions.

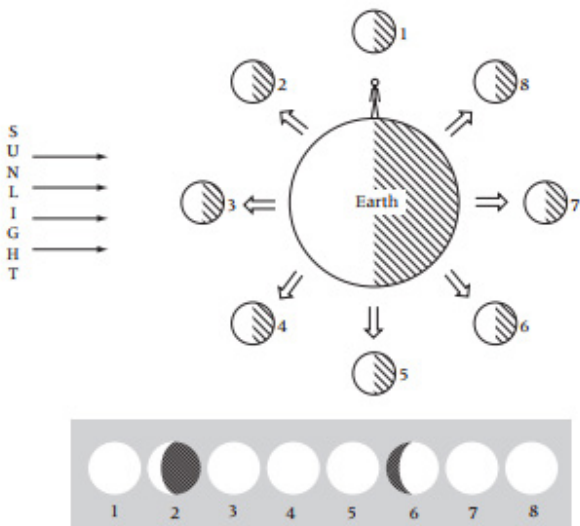


① Copy these diagrams of the Moon and complete the last four phases.

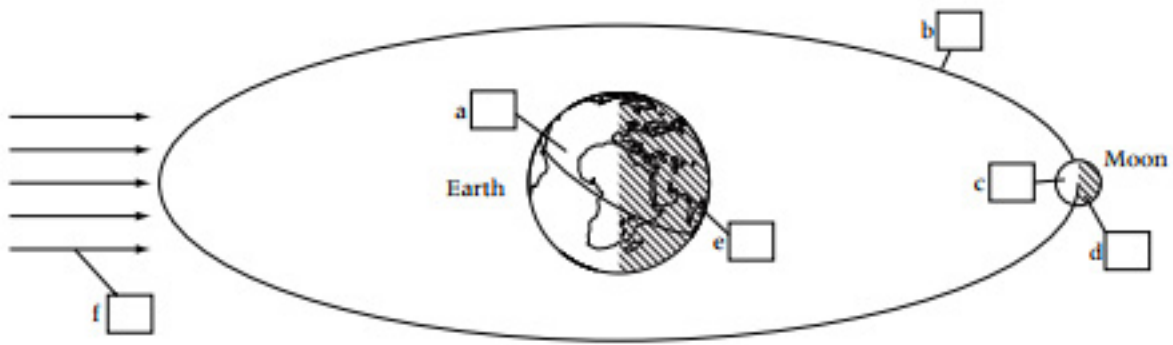


② We see the Moon from different direction as it moves around the Earth. The diagram below shows the Moon in different positions around the Earth.

Copy these circles into your book, and shade them in to show what the Moon would look like from Earth. Two have been done for you.



③ Write the number for the correct label in the boxes on the diagram below.



**Labels**

1 Moon's orbit

2 Night time on Earth

3 Dark side of the Moon

4 Day time on Earth

5 Sunlight

6 We can see this side of the Moon